

# DOTMAR

AGRICULTURAL PLASTIC PRODUCTS

StableBoard®  
UNIBOARD®

## TIMBER REPLACEMENT PRODUCTS EQUINE INDUSTRY



Dotmar's Specialised Polymer Range of equine friendly products are perfectly suited for replacing old, rotting and flakey timber from within the equine and agricultural industry. These products are the perfect alternative to marine and form ply as they will **never absorb animal urine**, will **never require painting** and is a **100% recyclable product**.

[www.dotmar.com.au](http://www.dotmar.com.au) 1800 170 001

# Choose The Right Material For The Job

High Impact Resistance, Round Yards, Stables, Horse Wash...choose



Horse floats and applications where weight reduction is a factor...choose

## DOTMAR StableBoard®

### Key Features of StableBoard:

**A High Impact Resistance Product** specifically developed to withstand the everyday wear and tear that horses and other animals may inflict on their environment for example kicking, shoving and chewing.

### Advantages of Uniboard and StableBoard

- Clean safe environment for horses
- Will not rot / Will not delaminate
- Does not hold smell of urine
- Horses have no desire to chew
- Parasite, rot & chemical resistance
- Low surface tension, dirt and other stains do not stick onto surface and are easily cleaned.
- Solid colour throughout material (no need to paint)
- Environmental recyclability
- No Moisture absorption, no deterioration
- Weight reduction\*
- Scratch resistance / UV resistance\* / Impact resistance
- Reduced maintenance
- Aesthetically pleasing compared to form ply
- Does not hold bacteria and can be easily cleaned



Essential Equine Veterinary - VIC

### Advantages of HDPE StableBoard

- Greater density than Uniboard
- 100% Solid sheet
- Available in Stippled or galvanised finish
- 100% Recycled
- Easier to handle than form ply

Panel	Thickness	Sheet Sizes	Colours	Surface Textures
StableBoard	10mm	1220x2440	Black Colours to order	Stippled or Galvanised finish
	12mm			
	15mm			
	19mm			
Uniboard	10mm	1220x2440	Black, White and Grey Colours to order	Textured finish
	12mm			
	15mm			
	19mm			

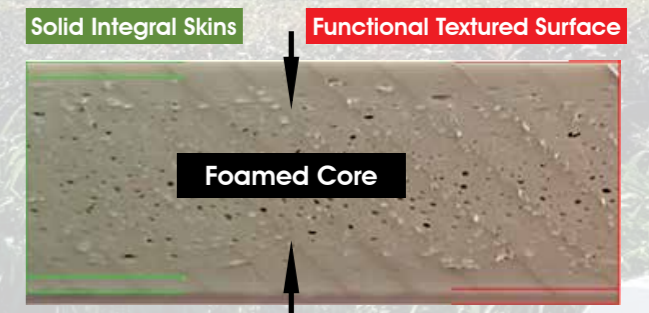
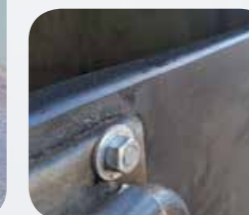
## DOTMAR UNIBOARD®

### Key Features of Uniboard:

**A Product 10 to 15% lighter** than conventional timber panels which makes this product ideal for horse float lining and places where weight reduction is a factor. Uniboard can also be used for High impact applications in 15mm & 19mm thickness.



Cummings Stables Randwick Racecourse - NSW



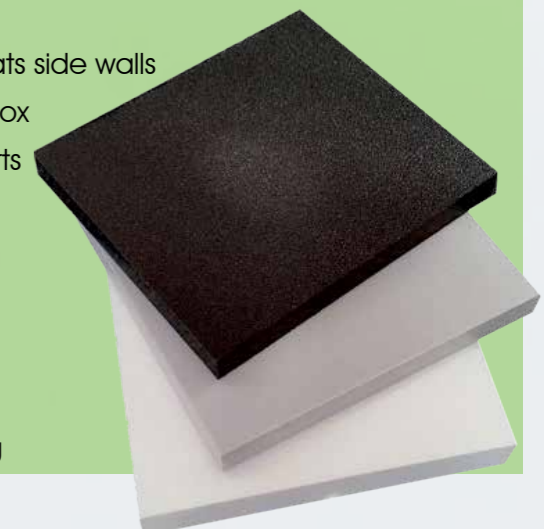
Uniboard is easy to work with and can be cut, routed, drilled & mechanically fastened with standard hardware materials.



Dotmar Uniboard panel replacement of plywood at Warwick Farm Racecourse - NSW

### Uniboard and StableBoard applications include

- Stable partitions
- Horse trailer & floats side walls
- Tail gate & tack box
- Upholstery supports
- Feed troughs
- Battery boxes
- Horse wash
- Round Yards
- Fences
- General cladding



# DOTMAR Signage Board

Dotmar Signage Board is a co-extruded polyethylene developed specifically for the playground and signage industries.

The vibrant colours available can be made into both simple and complex shapes and replace materials such as timber, aluminium and cement.

## Key Benefits of Signage Board

No painting required | Graffiti resistant  
UV Stabilised for the harsh Australian sun  
Highly impact resistant | Durable  
Tough | Easily cleaned



Working Equitation Bull



Colours Available

Dotmar DazzleBoards are produced in Australia for the Australian climate. They are made from **UV stabilised materials** in a wide range of bright colour combinations. The boards are routed from solid sheet which means they will **never require painting or maintenance**. **Lightweight and easy to set up**,

Dotmar DazzleBoards fit on to standard cups and look spectacular. You can choose your own design such as Club or Stud logo, or select from our range of ideas. Dotmar DazzleBoards can be purchased in sets of 3 or as individual boards.

Each board is 3000mm x 290mm x 12.7mm thick. Other dimensions available on request.

## DOTMAR Dazzle Boards



Communicable diseases in horses are passed from horse to horse and also through using common equipment or housing. Diseases that can be transmitted within the stable environment include **Equine Influenza Virus, Streptococcus Equi, Salmonella and Salmonellosis, Ring worm, other parasites and Bacterial infection.**

Any surface, such as timber or form ply, has the ability to absorb fluids including **blood, sweat, urine, faeces and respiratory fluids**, therefore also has the ability to transmit disease. To eliminate the risk of micro-organisms becoming established in stables, a regular cleaning and disinfecting program should be adhered to. This is only possible if all surfaces are impervious.

Most traditional materials cannot withstand constant cleaning.

Dotmar Agricultural products are impervious, can withstand pressure cleaning and strong detergents or disinfectants without any change in structure or appearance. Simply hosing down **Uniboard** and **StableBoard** panels will minimise spread of disease.

Mishel Metcalf | Equine Veterinarian Nurse

*"After approximately 3 months, the installed panels (Dotmar UNIBOARD) showed no signs of physical damage. The original painted timber panels had been chewed and were showing signs of rotting whereas the newly installed Uniboard panels have not been damaged by the horses. I was so pleased with this result"*

- Mark Jones | Track Manager - Warwick Farm Australian Turf Club Ltd

